



Safe and approved storage of aggressive, non flammable hazardous materials in workrooms

Function / construction:

Cabinet body

- **Robust construction and longevity:** cabinet body made of powder-coated sheet steel, safety elements assembled outside the storage compartment for increased protection against corrosion
- **Two in one:** two hermetically separated storage compartments allow the isolated storage of acids and bases in one cabinet
- **No unauthorised use:** doors lockable with profile cylinder (integration in an existing locking system possible)

- **Easy alignment:** adjusting aids to compensate for uneven floor

Recirculating air filter system

- Ideal for the direct installation in working areas – very low noise, only approx. 39 dB (A)
- With multi-stage wideband filter
- Monitoring electronics for extraction incl. cool-device cable and power plug
- Optical and acoustical alarm including potential-free alarm contact
- Display with innovative touch panel
- Manual check of the filter saturation

Recirculating air filter storage cabinet
SLX-CLASSIC model SLX.230.120.MV
 light grey (RAL 7035), interior equipment with 12 x pull-out shelf
 (panel melamine resin-coated/PP)
Order No. 32936-001-30608



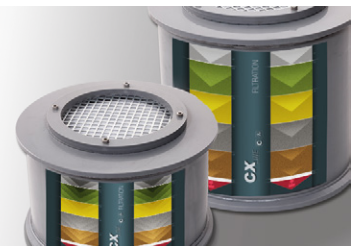
Available equipment:

- Bottom collecting sump PE (V=68 ltr.) with grid
- Shelf with plastic sump (V=33.5 ltr.) and grid
- Storage box for hydrofluoric acid, separately lockable with corrosion-resistant sump
- Pull-out shelves with removable plastic sump



Easy operation

Monitoring electronics with state-of-the-art 4.7" graphic display incl. touch panel, displays all essential monitoring-details



Reusable filter system

Multistage, high-capacity and robust broad band-pass filter, environmentally friendly due to long service lifetimes and filter recycling



Manual test device

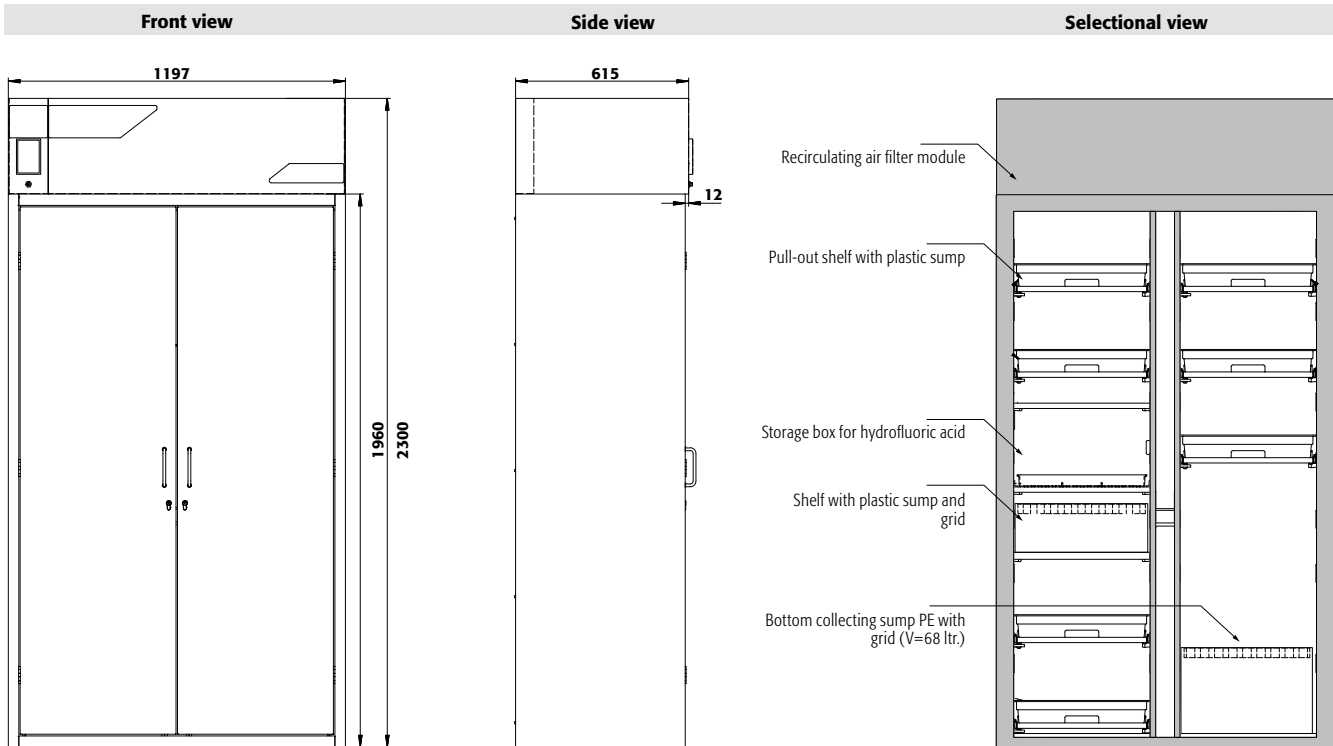
Easy monitoring of the filter saturation when storing inorganic substances



Storage box for hydrofluoric acid

Safe storage of dangerous hydrofluoric acid in separately lockable storage box, including a corrosion-resistant polypropylene sump





Technical data		SLX.230.120.MV	
External dimensions W x D x H	mm	1197 x 615 x 2300	
Internal dimensions W x D x H	mm	all compartments: 485 x 565 x 1865	
Weight without interior equip.	kg	195	
Distributed load	kg/m ²	204	
Maximum load	kg	300	
Frequency	Hz	50	
Nominal voltage	V	230	
Max. current consumption	A	0.5	
Power consump. in operation	W	120	
Power consump. in standby mode	W	50	

Are you looking for an appropriate storage solution for hazardous materials?

Our optimised online product configurator helps you, step by step, to find the suitable safety storage cabinet.

Take the test:
www.asecos-configurator.com

SLX
FX
CX

Order example - how to order correctly



Model	Information / equipment	Order No.	
SLX.230.120.MV	without interior equipment, with vertical dividing wall	32936	
Body colour	Door colour	Order No.	
Light grey RAL 7035	light grey RAL 7035	001 6	
Interior equipment packages (can only be ordered in combination with the cabinet)	Material	Order No.	
Left: 4x pull-out shelf (V=11.0L) Right: 4x pull-out shelf (V=11.0L)	panel melamine resin-coated/PP grey	30607 2	
Left: 6x pull-out shelf (V=11.0L) Right: 6x pull-out shelf (V=11.0L)	panel melamine resin-coated/PP grey	30608 2	
Left: 4x pull-out shelf (V=11.0L), 1x storage box for hydrofluoric acid (V=70L) Right: 4x pull-out shelf (V=11.0L)	panel melamine resin-coated/PP grey, panel melamine resin-coated/PE grey	37223 6	
Left: 4x pull-out shelf (V=11.0L), 1x storage box for hydrofluoric acid (V=70L) Right: 5x pull-out shelf (V=11.0L)	panel melamine resin-coated/PP grey, panel melamine resin-coated/PE grey	37224 6	
Left: 5x pull-out shelf (V=11.0L), 1x storage box for hydrofluoric acid (V=70L) Right: 6x pull-out shelf (V=11.0L)	panel melamine resin-coated/PP grey, panel melamine resin-coated/PE grey	37225 6	
Interior equipment	Material	W x D x H (mm)	Order No.
Pull-out shelf with PP-sump	panel melamine resin-coated/PP grey	407 x 468 x 80*	25.00 11.00 10.00 30609 2
Sump pallet on shelf with grid	PE	459 x 555 x 167*	70.00 33.50 30.45 30610 2
Sump pallet with grid	PE	454 x 538 x 314*	68.00 61.82 30611 6
* usable storage space W x D (mm)			
1) load capacity [kg], 2) retention capacity [ltr], 3) maximum container volume in the cabinet [ltr]			
Accessories	Material	W x D x H (mm)	Order No.
Activated carbon replacement filter	activated carbon	270 x 270 x 246	32952 2