



Safe and approved storage of aggressive, non flammable hazardous materials in workrooms

Function / construction:

Cabinet body

- **Robust construction and longevity:** cabinet body made of powder-coated sheet steel, safety elements assembled outside the storage compartment for increased protection against corrosion
- **Two in one:** two hermetically separated storage compartments allow the isolated storage of acids and bases in one cabinet
- **No unauthorised use:** doors lockable with profile cylinder (integration in an existing locking system possible)

- **Easy alignment:** adjusting aids to compensate for uneven floor

Recirculating air filter system

- Ideal for the direct installation in working areas – very low noise, only approx. 39 dB (A)
- With multi-stage wideband filter
- Monitoring electronics for extraction incl. cool-device cable and power plug
- Optical and acoustical alarm including potential-free alarm contact
- Display with innovative touch panel
- Manual check of the filter saturation

Recirculating air filter storage cabinet
SLX-CLASSIC model SLX.230.060.MH
 light grey (RAL 7035), interior equipment with 6 x pull-out shelf (panel melamine resin-coated/PP)
Order No. 32939-001-30615



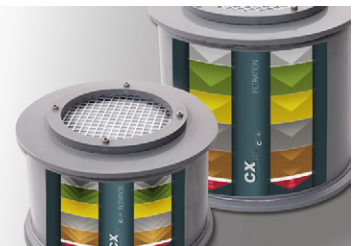
Available equipment:

- Bottom collecting sump PE (V=68 ltr.) with grid
- Shelf with plastic sump (V=33.5 ltr.) and grid
- Storage box for hydrofluoric acid, separately lockable with corrosion-resistant sump
- Pull-out shelves with removable plastic sump



Easy operation

Monitoring electronics with state-of-the-art 4.7" graphic display incl. touch panel, displays all essential monitoring-details



Reusable filter system

Multistage, high-capacity and robust broad band-pass filter, environmentally friendly due to long service lifetimes and filter recycling



Manual test device

Easy monitoring of the filter saturation when storing inorganic substances



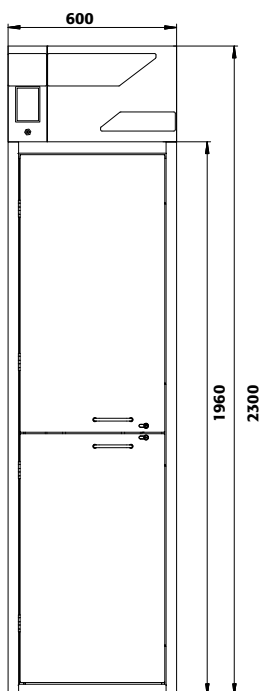
Storage box for hydrofluoric acid

Safe storage of dangerous hydrofluoric acid in separately lockable storage box, including a corrosion-resistant polypropylene sump

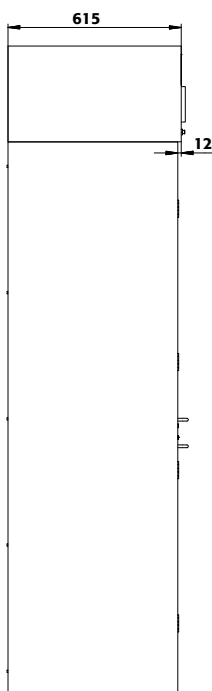




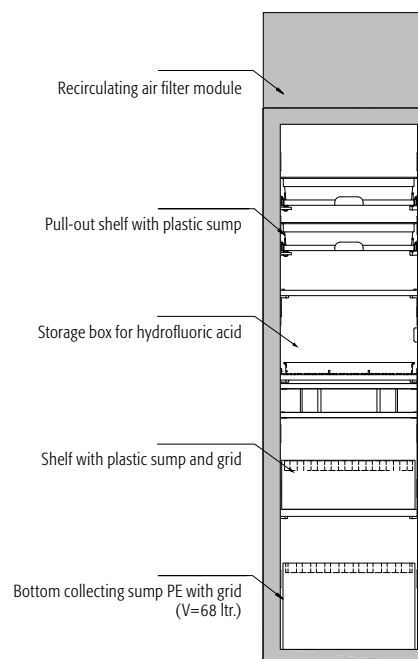
Front view



Side view



Selectional view



Technical data

External dimensions W x D x H	mm	600 x 615 x 2300
Internal dimensions W x D x H	mm	all compartments: 485 x 565 x 914
Weight without interior equip.	kg	152
Distributed load	kg/m ²	363,00
Maximum load	kg	300
Frequency	Hz	50
Nominal voltage	V	230
Max. current consumption	A	0.5
Power consump. in operation	W	120
Power consump. in standby mode	W	50

SLX.230.060.MH

The asecos HazMat Guide

... we have collected the most important information on storing and handling hazardous materials safely. Order your free copy now: www.asecos.global



Order example - how to order correctly



32939 - 001 - 30614

Model	Information / equipment	Order No.
SLX.230.060.MH	without interior equipment, left hinged, with horizontal dividing wall	32939
SLX.230.060.MH.R	without interior equipment, right hinged, with horizontal dividing wall	32942

Body colour	Door colour	Order No.
Light grey RAL 7035	light grey RAL 7035	001 6

Interior equipment packages (can only be ordered in combination with the cabinet)	Material	Order No.
Top: 2x pull-out shelf (V=11.0L) Bottom: 2x pull-out shelf (V=11.0L)	panel melamine resin-coated/PP grey	Door hinge: left right 30614 30614 2
Top: 3x pull-out shelf (V=11.0L) Bottom: 3x pull-out shelf (V=11.0L)	panel melamine resin-coated/PP grey	30615 30615 2
Top: 1x pull-out shelf (V=11.0L), 1x storage box for hydrofluoric acid (V=70L) Bottom: 2x pull-out shelf (V=11.0L)	panel melamine resin-coated/PP grey, panel melamine resin-coated/PE grey	37217 37220 6
Top: 1x pull-out shelf (V=11.0L), 1x storage box for hydrofluoric acid (V=70L) Bottom: 3x pull-out shelf (V=11.0L)	panel melamine resin-coated/PP grey, panel melamine resin-coated/PE grey	37218 37221 6
Top: 2x pull-out shelf (V=11.0L), 1x storage box for hydrofluoric acid (V=70L) Bottom: 3x pull-out shelf (V=11.0L)	panel melamine resin-coated/PP grey, panel melamine resin-coated/PE grey	37219 37222 6

Interior equipment	Material	W x D x H (mm)	1)	2)	3)	Order No.
Pull-out shelf with PP-sump	panel melamine resin-coated/PP grey	407 x 468 x 80*	25.00	11.00	10.00	30609 2
Sump pallet on shelf with grid	PE	459 x 555 x 167*	70.00	33.50	30.45	30610 2
Sump pallet with grid	PE	454 x 538 x 314*		68.00	61.82	30611 6

* usable storage space W x D (mm)
1) load capacity [kg], 2) retention capacity [ltr], 3) maximum container volume in the cabinet [ltr]

Accessories	Material	W x D x H (mm)	Order No.
Activated carbon replacement filter	activated carbon	270 x 270 x 181	32953 2

SLX
FX
CX