



Safe and approved storage of water pollutants, non-flammable liquids and toxics in working areas according to TRGS 510

Function / construction:

Cabinet body

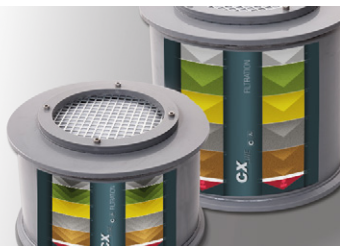
- **Robust construction and longevity:** robust, high-quality, scratch-resistant outer body with powder-coated textured surface
- **No unauthorised use:** doors lockable with cylinder locking (integrated in the turning handle)
- **Easy alignment:** adjusting aids to compensate for uneven floor

Recirculating air filter system

- Ideal for the direct installation in working areas – very low noise, only approx. 39 dB (A)
- With multi-stage wideband filter
- Monitoring electronics for extraction incl. cool-device cable and power plug
- Optical and acoustical alarm including potential-free alarm contact
- Display with innovative touch panel
- Manual check of the filter saturation

Recirculating air filter storage cabinet
CX-CLASSIC-G model CX.229.081.WDFW
 body colour anthracite grey (RAL 7016), with glass-paneled wing doors in light grey (RAL 7035), interior equipment with 4 x pull-out shelf (sheet steel powder-coated/PP)
Order No. 32929-041-30548

Technical data		CX.229.081.WDFW
External dimensions W x D x H	mm	810 x 520 x 2290
Internal dimensions W x D x H	mm	751 x 493 x 1835
Weight without interior equipment	kg	93
Distributed load	kg/m ²	563
Frequency	Hz	50
Nominal voltage	V	230
Maximum current consumption	A	0,5
Power consumption in operation	W	120
Power consumption in standby mode	W	50



Reusable filter system
 Multistage, high-capacity and robust broad band-pass filter, environmentally friendly due to long service lifetimes and filter recycling



Easy operation
 Monitoring electronics with state-of-the-art 4.7" graphic display incl. touch panel, displays all essential monitoring-details

Available equipment:

- Bottom collecting sump – optionally in galvanised or painted version, liquid-tight
- Shelves – optionally in galvanised or powder-coated version, height adjustable
- Perforated insert useable as storage area
- Pull-out shelves with removable plastic sump



Extraction and filtration
 Filtration of solvent vapours (hydrocarbons) as well as inorganic and organic hazardous materials



Manual test device
 Easy monitoring of the filter saturation when storing inorganic substances





Recirculating air filter storage cabinet
CX-CLASSIC-G model CX.229.081.WDFW
 body colour anthracite grey (RAL 7016), with glass-paneled wing doors in light grey (RAL 7035), interior equipment with 6 x pull-out shelf (sheet steel powder-coated/PP)
Order No. 32929-041-30550



Recirculating air filter storage cabinet
CX-CLASSIC-G model CX.229.081.WDFW
 body colour anthracite grey (RAL 7016), with glass-paneled wing doors in pure white (RAL 9010), interior equipment with 3 x shelf, 1 x perforated insert, 1 x bottom collecting sump (sheet steel galvanised)
Order No. 32929-050-30542

2 door colours are available **at no extra cost:**



041 050

Order example - how to order correctly



Model	Information / equipment	Order No.
CX.229.081.WDFW	without interior equipment with glass-paneled wing doors	32929

Body colour	Door colour	Order No.
Anthracite grey RAL 7016	light grey RAL 7035	041
Anthracite grey RAL 7016	pure white RAL 9010	050

Interior equipment packages (can only be ordered in combination with the cabinet)	Material	Order No.
3x shelf, 1x perforated insert, 1x bottom collecting sump (V=33.0L)	sheet steel galvanised	30542
3x shelf, 1x bottom collecting sump (V=33.0L)	sheet steel galvanised	30543
3x shelf, 1x perforated insert, 1x bottom collecting sump (V=33.0L)	sheet steel powder-coated RAL 7035, sheet steel galvanised	30544
3x shelf, 1x bottom collecting sump (V=33.0L)	sheet steel powder-coated RAL 7035, sheet steel galvanised	30545
3x shelf, 1x bottom collecting sump with grid (V=33.0L)	sheet steel galvanised, sheet steel galvanised and coated blue	30546
3x shelf, 1x bottom collecting sump with grid (V=33.0L)	sheet steel powder-coated RAL 7035, sheet steel galvanised and coated blue	30547
4x pull-out shelf (V=22.0L)	sheet steel powder-coated/PP RAL 7035	30548
5x pull-out shelf (V=22.0L)	sheet steel powder-coated/PP RAL 7035	30549
6x pull-out shelf (V=22.0L)	sheet steel powder-coated/PP RAL 7035	30550

Interior equipment	Material	W x D x H (mm)	1)	2)	3)	Order No.
Shelf	sheet steel galvanised	748 x 492 x 30	60.00			30551
Shelf	sheet steel powder-coated RAL 7035	748 x 492 x 30	60.00			30552
Perforated insert	sheet steel galvanised	731 x 412 x 41	60.00			30553
Bottom collecting sump	sheet steel galvanised	736 x 415 x 112*	33.00	30.00		30554
Bottom collecting sump with grid	sheet steel galvanised and coated blue	739 x 411 x 129*	33.00	30.00		30555
Pull-out shelf with PP-sump	sheet steel powder-coated/PP RAL 7035	644 x 416 x 102*	30.00	22.00	20.00	30556
Box for chemicals	PP blue	410 x 300 x 260				30038

* usable storage space W x D (mm)
 1) load capacity (kg), 2) retention capacity (ltr), 3) maximum container volume in the cabinet (ltr)

Accessories	Material	W x D x H (mm)	Order No.
Activated carbon replacement filter	activated carbon	270 x 270 x 181	32953