

# Mix Flow Inline Fan Series



## FM Serials Ventilator Products

The LTi Mix flow In-line fans are the result of long experience in the development and manufacturing of ventilation systems. The partnership between highly motivated LTi employees and world known component suppliers; guarantees quality products on the highest technical level and precise reliability.

### **The LTi advantage:**

- Easy electrical connection
- Easy installation
- Impellers and casings made of galvanized steel or coated steel
- High efficiency & economic
- Can also be operated in polluted air without problems
- Low noise & quiet running
- Application flexibility

### **The LTi quality:**

LTi Mix flow In-line Duct fans are combined with domestic and foreign advanced technology on design. The sizes of inlet duct and outlet duct are the same.

Connected the fan and piping directly could save design and installation cost on piping. The special housing could reduce noise and vibration, best design on the impeller base on aerodynamics.

Design for blow, exhaust, circle, renew and filtration. It could be used in hotels, marketplace, gymnasium, supermarket, store room and most of the public places

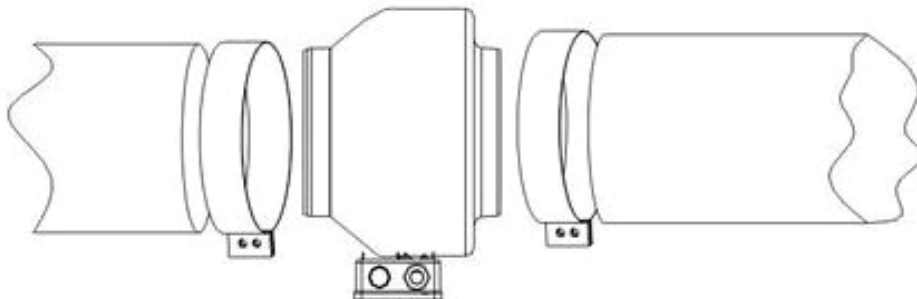
## FM Serials Ventilator Products

LTi FM fan is designed to cater for high air flow and high static pressure requirements. It is light weight and has excellent performance to sound level ratio.

The uniquely designed 3 speeds external rotor motor provides additional choices for different applications.

### Casing

- Manufactured from rust-resistance pre-galvanised steel
- Aerodynamically designed inlet vanes ensures high efficiency performance at low sound level



No appliance of this range weighs more than 10 kg, so that one person alone can conveniently move and install them. All materials of Circular duct fans are complied with RoHs requirement.

### Motor

- Uniquely designed 3 speeds external rotor motor
- Moisture resistant, suitable for humid and damp environments
- Permanently lubricated ball bearings ensuring reliable and maintenance-free operation
- Class F insulation
- Speed controller (optional)
- Suitable for operation in ambient temperatures ranging from -14°C to +40°C
- Built-in thermal protection device

### Impeller

- Mix flow impeller

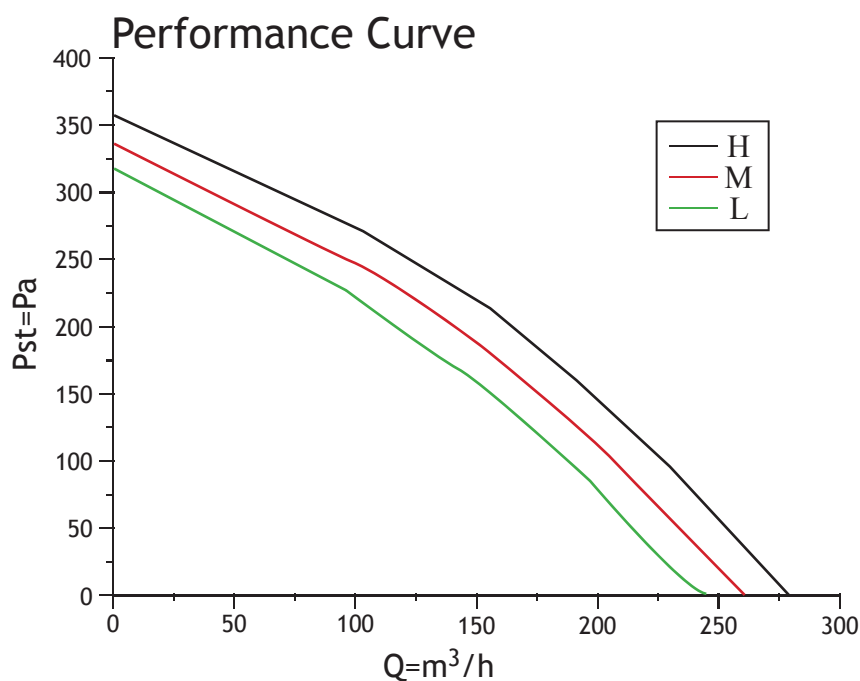
# FM 100



### Description:

- Higher airflow with medium static pressure
- Casing and impeller are of PVC material
- Mix flow impeller
- Uniquely designed 3 speeds external rotor motor
- Speed Controllable
- Compact in size
- Lighter in weight
- High efficiency
- Low sound level

Fan Series	FM 100					SOUND DATA											
	Voltage/Frequency	V (50 Hz)	230			Breakout	Hz	SPEED	Mid-frequency band, Hz								
	Phase	-	1						63	125	250	500	1k	2k	4k	8k	
	Power/Frequency	W (50 Hz)	64	57	54				dB(A)	H	16	33	45	52	50	51	43
Current/Frequency	A (50 Hz)	0.28	0.25	0.24	M					12	31	45	49	45	46	39	33
R.p.m.	min <sup>-1</sup> (50 Hz)	2552	2390	2246	L	12	30	41		49	45	46	39	33			
Sound Pressure level at 3m	dB (A)	38	35	33	Enclosure class, motor		IP		44		Capacitor		μF		2		



# FM 125

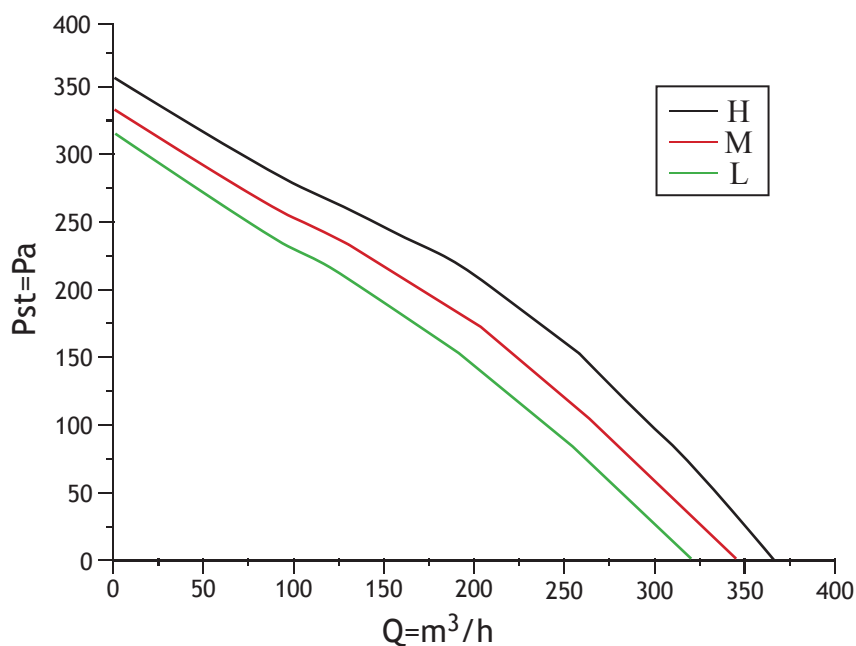


### Description:

- Higher airflow with medium static pressure
- Casing and impeller are of PVC material
- Mix flow impeller
- Uniquely designed 3 speeds external rotor motor
- Speed Controllable
- Compact in size
- Lighter in weight
- High efficiency
- Low sound level

FM Fan Series	FM 125		H	M	L	SOUND DATA										
	Voltage/Frequency	V (50 Hz)	230			Breakout	Hz	SPEED	Mid-frequency band, Hz							
	Phase	-	1						63	125	250	500	1k	2k	4k	8k
	Power/Frequency	W (50 Hz)	64	57	55		dB(A)	H	12	31	38	49	51	53	49	42
	Current/Frequency	A (50 Hz)	0.28	0.25	0.24			M	13	29	34	48	49	52	46	40
	R.p.m.	min <sup>-1</sup> (50 Hz)	2550	2390	2240			L	11	28	34	47	47	50	44	38
	Sound Pressure level at 3m	dB (A)	39	38	36											
	Enclosure class, motor	IP	44													
Capacitor	μF	2														

### Performance Curve



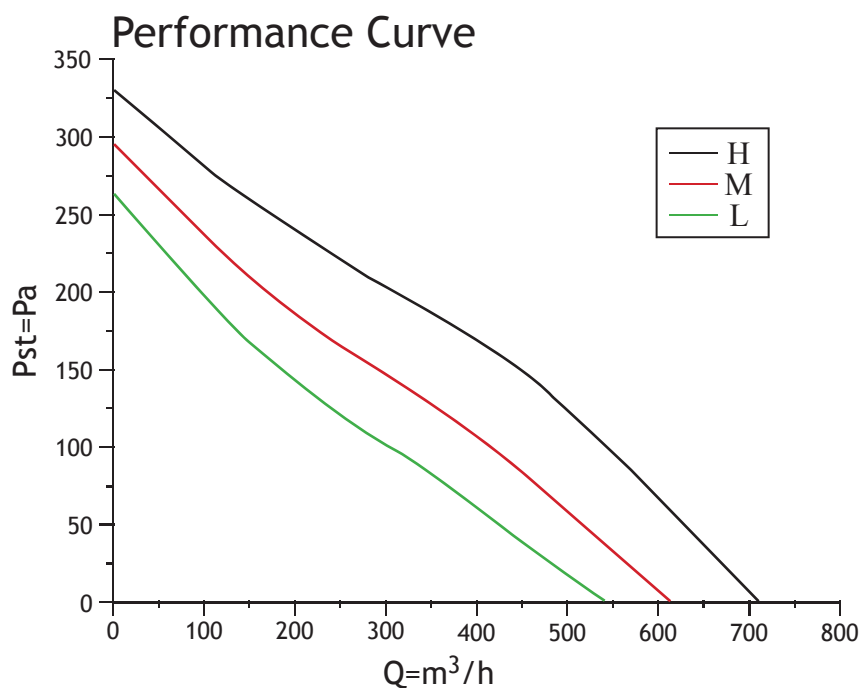
# FM 160



### Description:

- Higher airflow with medium static pressure
- Casing and impeller are of PVC material
- Mix flow impeller
- Uniquely designed 3 speeds external rotor motor
- Speed Controllable
- Compact in size
- Lighter in weight
- High efficiency
- Low sound level

FM Fan Series	FM 160		H	M	L	SOUND DATA										
	Voltage/Frequency	V (50 Hz)	230			Breakout	Hz	SPEED	Mid-frequency band, Hz							
	Phase	-	1						63	125	250	500	1k	2k	4k	8k
	Power/Frequency	W (50 Hz)	90	74	67		dB(A)	H	12	29	32	49	50	55	46	44
	Current/Frequency	A (50 Hz)	0.40	0.35	0.32			M	11	25	35	48	47	50	41	41
	R.p.m.	min <sup>-1</sup> (50 Hz)	2101	1812	1610			L	8	22	32	48	46	48	38	36
	Sound Pressure level at 3m	dB (A)	40	36	34											
	Enclosure class, motor	IP	44													
Capacitor	μF	2.5														



# FM 200

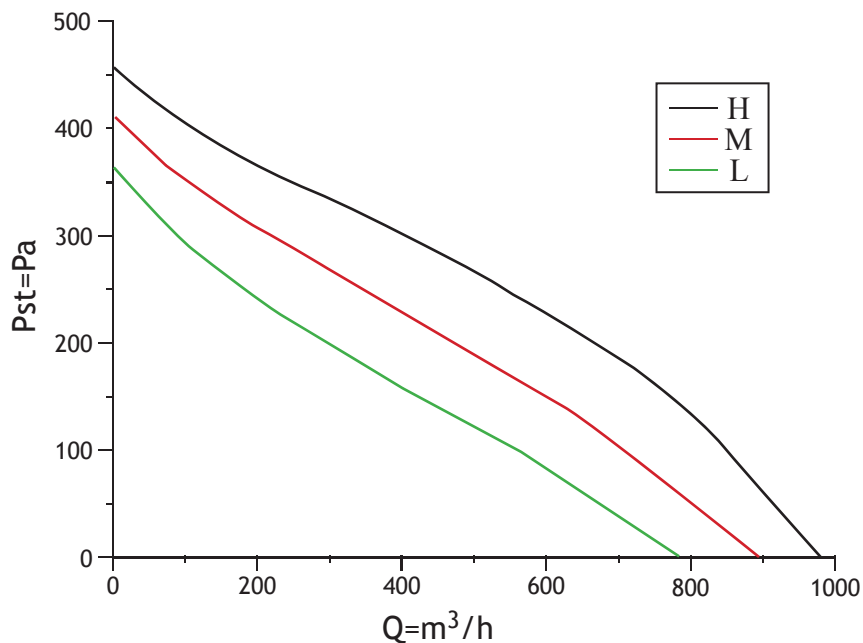


### Description:

- Higher airflow with medium static pressure
- Casing and impeller are of PVC material
- Mix flow impeller
- Uniquely designed 3 speeds external rotor motor
- Speed Controllable
- Compact in size
- Lighter in weight
- High efficiency
- Low sound level

FM Fan Series	FM 200		H	M	L	SOUND DATA												
	Voltage/Frequency	V (50 Hz)	230			Breakout	Hz	SPEED	Mid-frequency band, Hz									
	Phase	-	1						63	125	250	500	1k	2k	4k	8k		
	Power/Frequency	W (50 Hz)	135	121	112				dB(A)	H	17	30	40	54	60	59	59	48
	Current/Frequency	A (50 Hz)	0.60	0.54	0.50					M	13	29	39	51	55	56	55	44
	R.p.m.	min <sup>-1</sup> (50 Hz)	2323	2090	1830					L	10	25	42	52	52	51	48	39
	Sound Pressure level at 3m	dB (A)	47	43	39													
	Enclosure class, motor	IP	44															
Capacitor	μF	3.5																

### Performance Curve



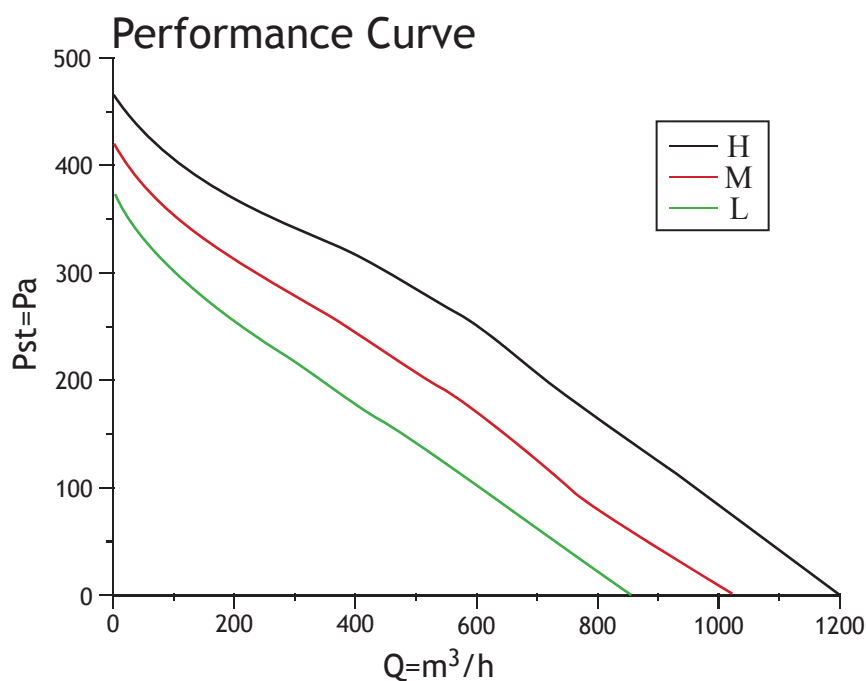
# FM 250



### Description:

- Higher airflow with medium static pressure
- Casing and impeller are of PVC material
- Mix flow impeller
- Uniquely designed 3 speeds external rotor motor
- Speed Controllable
- Compact in size
- Lighter in weight
- High efficiency
- Low sound level

FM Fan Series	FM 250		H	M	L	SOUND DATA										
	Voltage/Frequency	V (50 Hz)	230			Breakout	Hz	SPEED	Mid-frequency band, Hz							
	Phase	-	1						63	125	250	500	1k	2k	4k	8k
	Power/Frequency	W (50 Hz)	140	118	110		dB(A)	H	16	32	40	59	61	61	55	50
	Current/Frequency	A (50 Hz)	0.61	0.55	0.52			M	15	31	40	55	60	59	52	48
	R.p.m.	min <sup>-1</sup> (50 Hz)	2415	2205	1984			L	12	29	39	54	58	59	50	42
	Sound Pressure level at 3m	dB (A)	48	46	45											
	Enclosure class, motor	IP	44													
Capacitor	µF	4														





# FM 315

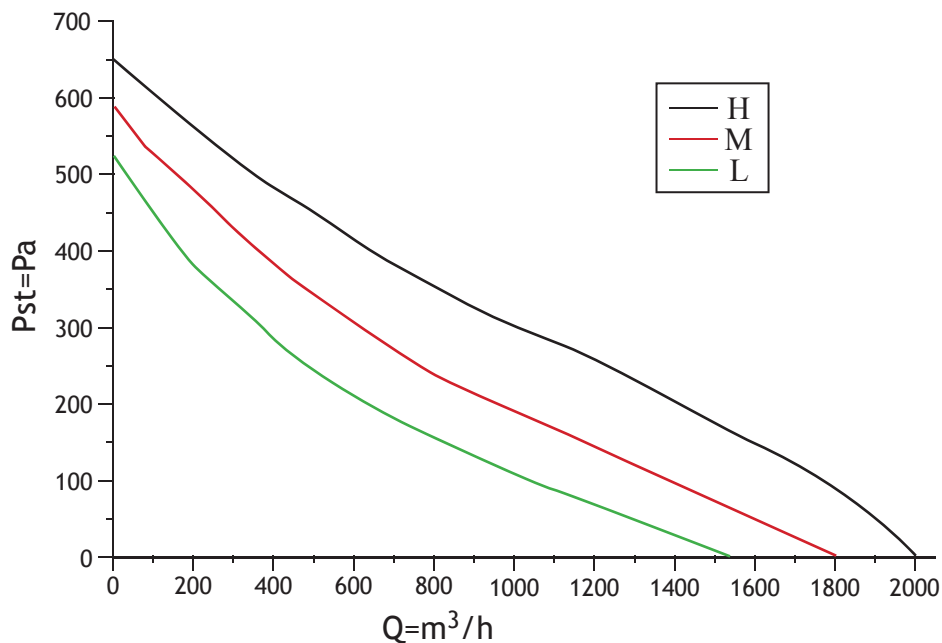


### Description:

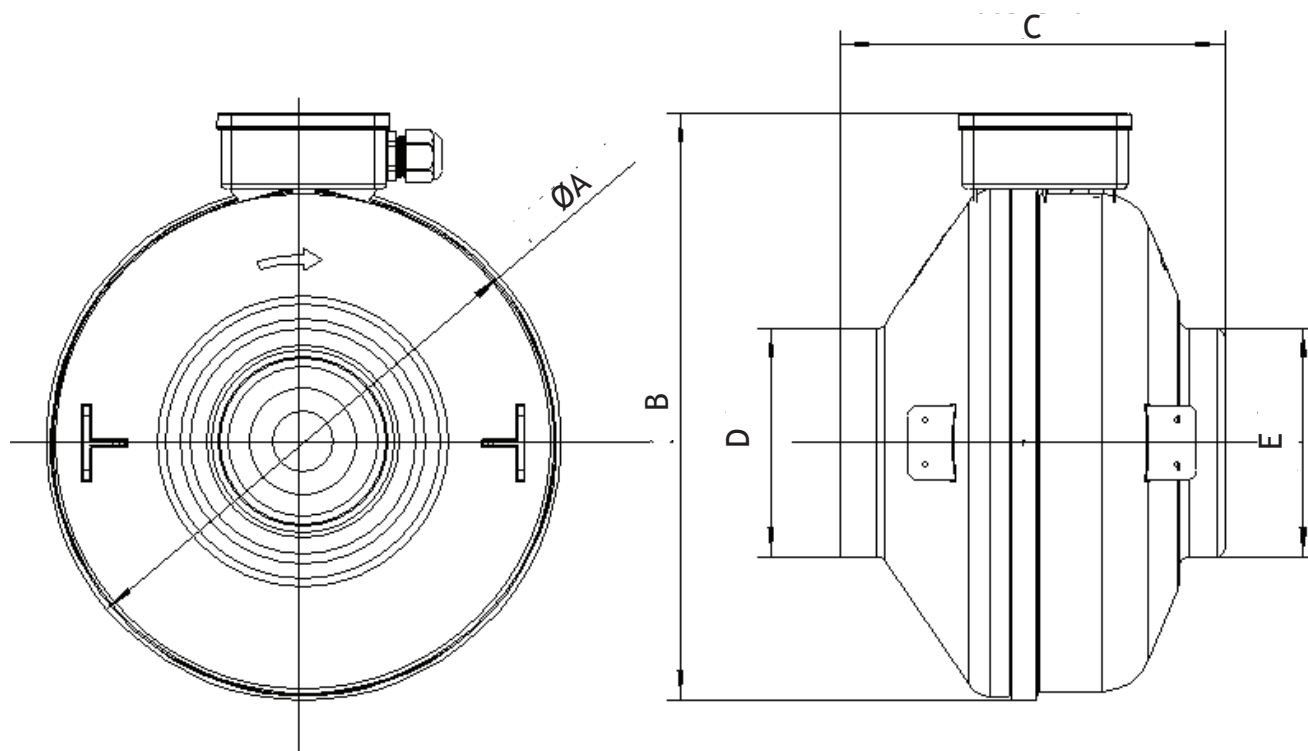
- Higher airflow with medium static pressure
- Casing and impeller are of PVC material
- Mix flow impeller
- Uniquely designed 3 speeds external rotor motor
- Speed Controllable
- Compact in size
- Lighter in weight
- High efficiency
- Low sound level

FM Fan Series	FM 315		H	M	L	SOUND DATA										
	Voltage/Frequency	V (50 Hz)	230			Breakout	Hz	SPEED	Mid-frequency band, Hz							
	Phase	-	1						63	125	250	500	1k	2k	4k	8k
	Power/Frequency	W (50 Hz)	206	186	176		dB(A)	H	13	29	40	61	63	66	68	59
	Current/Frequency	A (50 Hz)	0.90	0.81	0.80			M	12	29	39	52	57	64	64	55
	R.p.m.	min <sup>-1</sup> (50 Hz)	2394	2181	1930			L	12	25	38	49	55	60	63	53
	Sound Pressure level at 3m	dB (A)	54	51	48											
	Enclosure class, motor	IP	44													
Capacitor	μF	5														

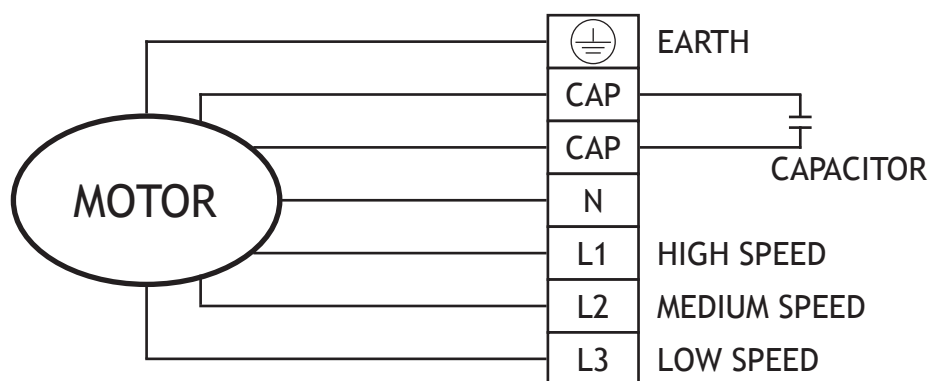
### Performance Curve



# DIMENSION



DIMENSION DATA					
	$\varnothing A$	B	C	D	E
FM 100	280	332	210	98	98
FM 125	280	322	210	124	124
FM 160	310	352	242	158	158
FM 200	340	382	253	198	198
FM 250	350	387	237	248	248
FM 300	415	457	254	313	313





**LTI Ventilatoren (Asia) Pte Ltd**

19 Jalan Mesin

Singapore 368818

Tel: +65 6564 6678

Fax: +65 6564 6616

E-Mail: [sales@lti.com.sg](mailto:sales@lti.com.sg)